



HYGIENE KANAL CLEAN TRUNKING TYPE CT



Being first is good, being smart is better, being both is Simply the Best!



Hygienekanalene

En renslig installasjon for hygieniske og støvfrie omgivelser.

Alle bilder er fra en referanseinstallasjon hos Gilde slakteri på Forus, Stavanger, der 4000m CT Hygienekanaler med deksel og 1200m CT Armaturkanaler ble levert.

The Clean Trunking

A clean installation for a hygienic and clean environment.

All pictures are from a reference installation at Gilde slaughter-house, Forus, Stavanger, supplied with 4000m CT-trunks with covers and 1200m CT-Lighting trunks.





HYGIENE KANAL Type CT

Et kabelbanesystem for næringsmiddelindustrien og støvfrie produksjonsmiljøer.

- Rustfri syrefast utførelse
- Leveres i bredder fra 200 - 600 mm.
- Vangehøyde 60 mm. (Andre på forespørsel).
- Konstruert for å tåle nedvasking/spyling.
- Deksel med fall (mønet tak) sikrer god avrenning.
- Glatte flater, ingen oppsamlingspunkt for vann eller smuss.
- Alle hulrom/spalter tettes med Sikaflex slik som skjøter og mellom baner og konsoller.
- Ingen løse deler.
- Komplette delevalg.

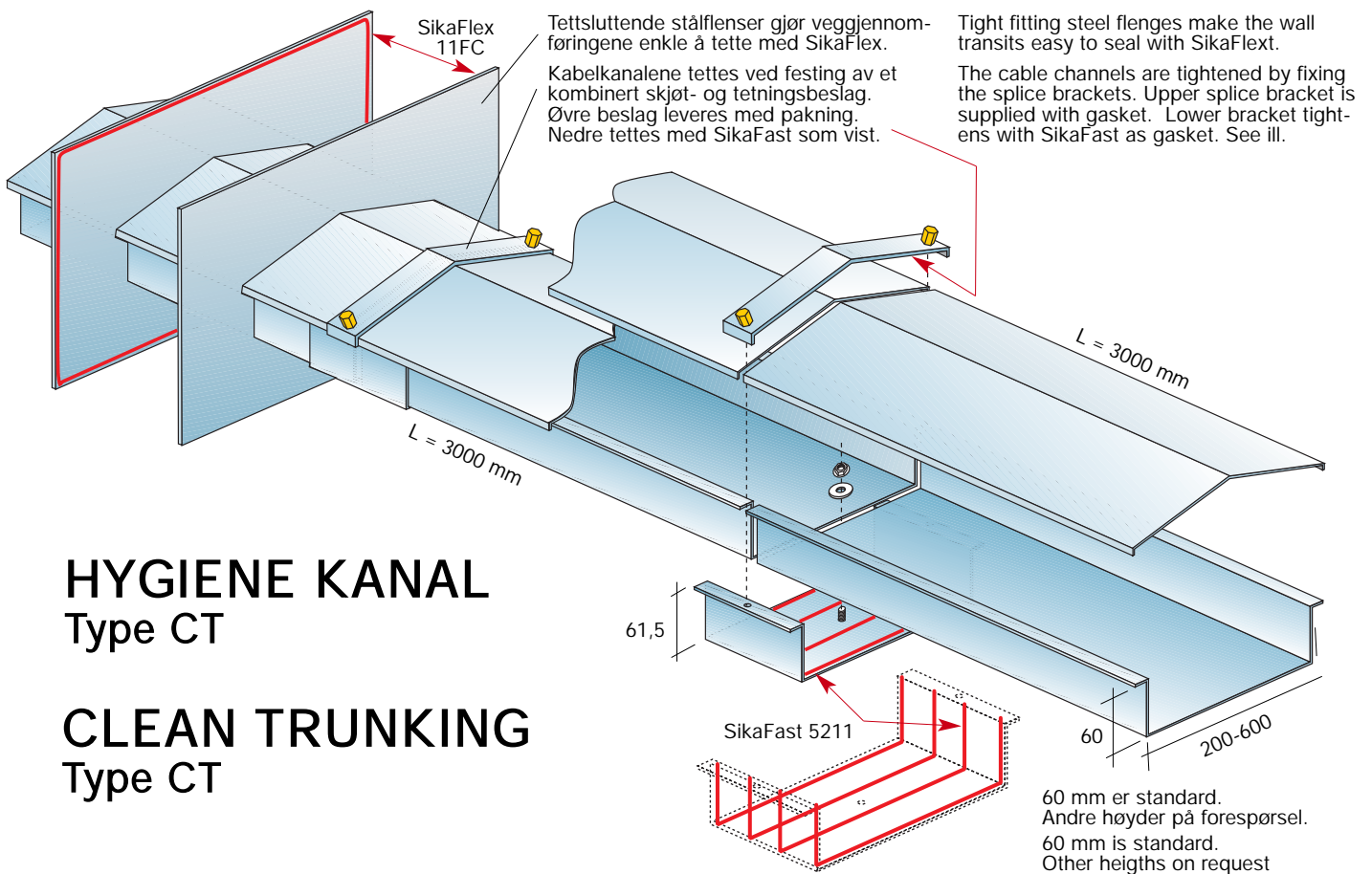
Retten til mindre tekniske endringer forbeholdes. Sjekk våre websider for siste utgave.

CLEAN TRUNKING Type CT

A cable trunking system for the food process industry and clean room plants.

- Supplied in stainless steel AISI 316.
- Widths from 200 - 600 mm.
- Side piece height 60 mm. (Others on request).
- Made for high pressure water cleaning.
- Standard peaked cover for easy drainage.
- Smooth surfaces, no dirt traps.
- All cavities/splits are tightened with Sikaflex as with splices and between tray/console.
- No loose parts.
- Complete system.

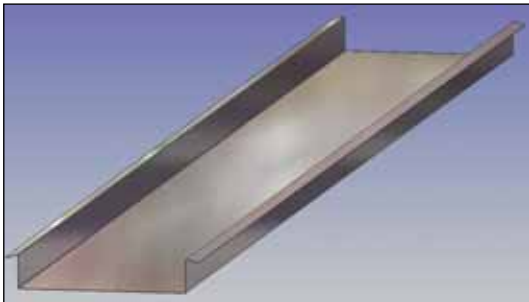
Subject to minor changes without notice. Check our website for latest issues.



HYGIENE KANAL Type CT

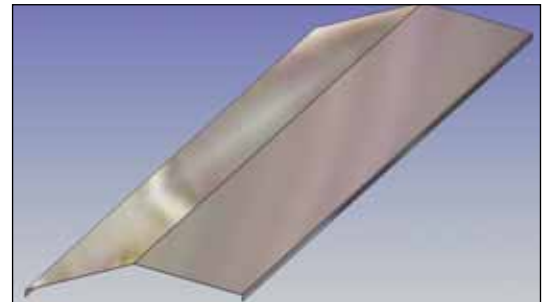
CLEAN TRUNKING Type CT

Deleprogram / Clean Trunking items



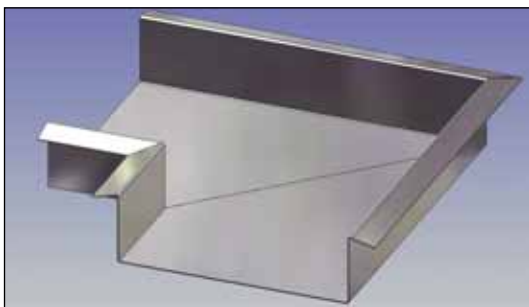
Kabelkanal / Cable trunking:

CT-60 CT-200	80481
CT-60 CT-300	80482
CT-60 CT-400	80483
CT-60 CT-500	80484
CT-60 CT-600	80485



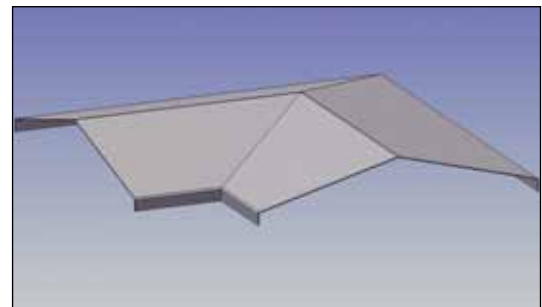
Deksel / Cover:

CT-60 CO-CT-200	80487
CT-60 CO-CT-300	80488
CT-60 CO-CT-400	80489
CT-60 CO-CT-500	80490
CT-60 CO-CT-600	80491



Bend 90° / Bend 90°:

CT-60 FE-90-200	80493
CT-60 FE-90-300	80494
CT-60 FE-90-400	80495
CT-60 FE-90-500	80496
CT-60 FE-90-600	80497



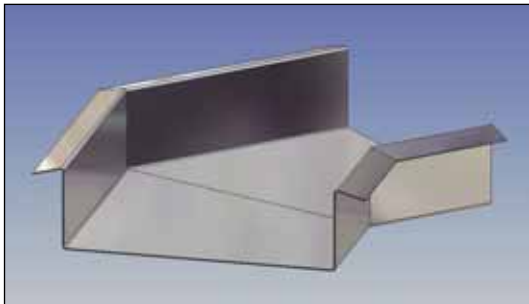
Deksel 90° / Cover 90°:

CT-60 CO-FE-90-200	80499
CT-60 CO-FE-90-300	80500
CT-60 CO-FE-90-400	80501
CT-60 CO-FE-90-500	80502
CT-60 CO-FE-90-600	80503



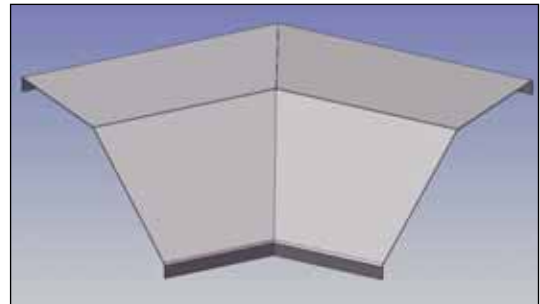
Vår Hygiene Kanal er skreddersydd til næringsmiddel-industriens behov for rengjøring med høytrykkspyling, uten å etterlate noe areal til bakterievekst. Utført i rustfritt stål, mønte deksel med dryppnese og opphengstør uten smussamlere, gjør at rengjørings-personalet kan høytrykksspyle fritt, uten risiko for skadevirkninger på elektriske installasjoner.

Our Clean Trunk channel system is tailor-made to the food processing industries need for high pressure water cleaning methods to leave no areas left for bacteria growth. Supplied in stainless steel, peaked covers with drip nose, smooth plates and support equipment without dirt traps, the cleaning personell can do their work without any risk of damage to the electrical installations.



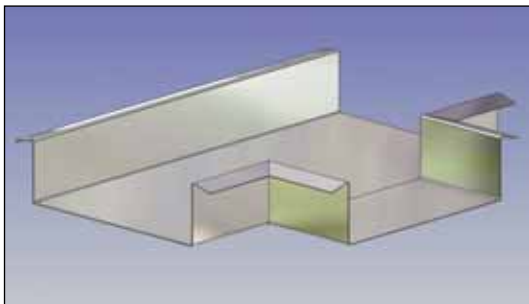
Bend 45° / Bend 45°:

CT-60 FE-45-200	80556
CT-60 FE-45-300	80557
CT-60 FE-45-400	80558
CT-60 FE-45-500	80559
CT-60 FE-45-600	80560



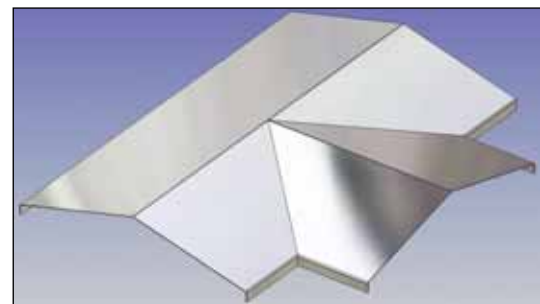
Deksel 45° / Cover 45°:

CT-60 CO-FE-45-200	80562
CT-60 CO-FE-45-300	80563
CT-60 CO-FE-45-400	80564
CT-60 CO-FE-45-500	80565
CT-60 CO-FE-45-600	80566



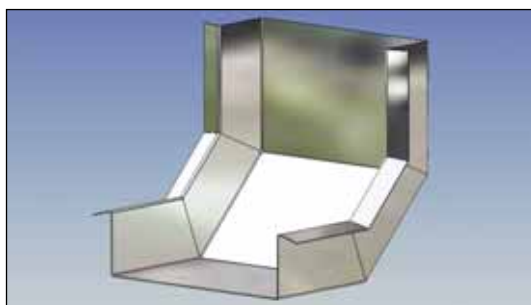
T-avgreining / T-piece:

CT-60 TE-200	80505
CT-60 TE-300	80506
CT-60 TE-400	80507
CT-60 TE-500	80508
CT-60 TE-600	80509



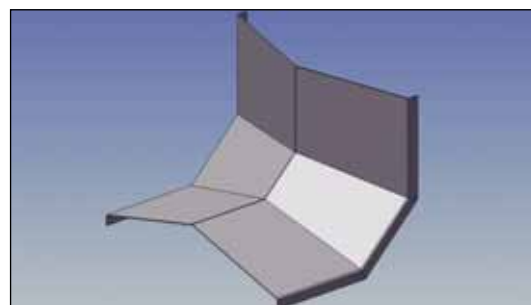
Deksel T-avgr. / Cover T-piece:

CT-60 CO-TE-200	80511
CT-60 CO-TE-300	80512
CT-60 CO-TE-400	80513
CT-60 CO-TE-500	80514
CT-60 CO-TE-600	80515



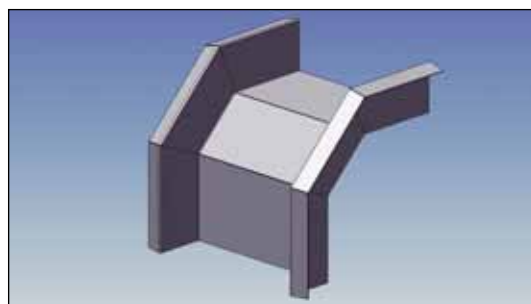
Innvendig vertikalbend 90°:
Inside vertical riser 90°:

CT-60 RI-IN-90-200	80580
CT-60 RI-IN-90-300	80581
CT-60 RI-IN-90-400	80582
CT-60 RI-IN-90-500	80583
CT-60 RI-IN-90-600	80584



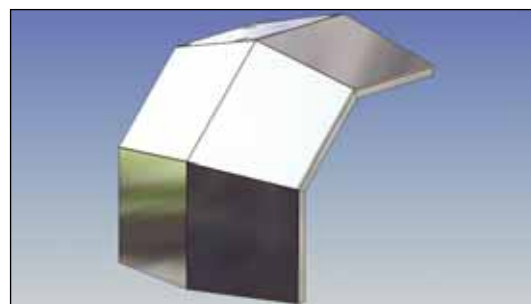
Deksel til innvendig vertikalbend 90°:
Cover for inside vertical riser 90°:

CT-60 CO-RI-IN-90-200	80586
CT-60 CO-RI-IN-90-300	80587
CT-60 CO-RI-IN-90-400	80588
CT-60 CO-RI-IN-90-500	80589
CT-60 CO-RI-IN-90-600	80590



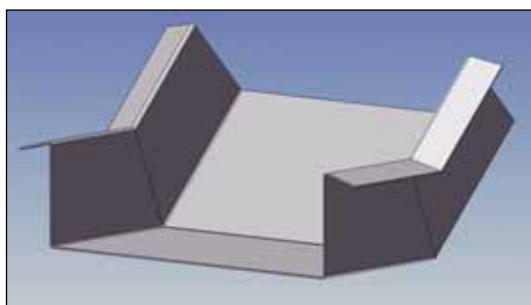
Utvendig vertikalbend 90°:
Outside vertical riser 90°:

CT-60 RI-OU-90-200	80599
CT-60 RI-OU-90-300	80600
CT-60 RI-OU-90-400	80601
CT-60 RI-OU-90-500	80602
CT-60 RI-OU-90-600	80603



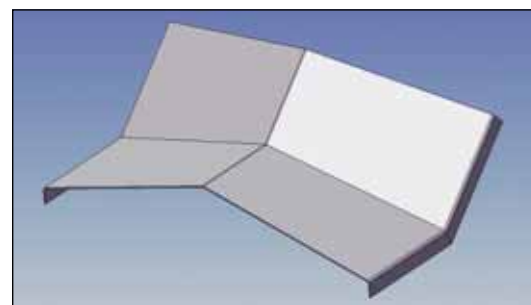
Deksel til utvendig vertikalbend 90°:
Cover for outside vertical riser 90°:

CT-60 CO-RI-OU-90-200	80610
CT-60 CO-RI-OU-90-300	80611
CT-60 CO-RI-OU-90-400	80612
CT-60 CO-RI-OU-90-500	80613
CT-60 CO-RI-OU-90-600	80614



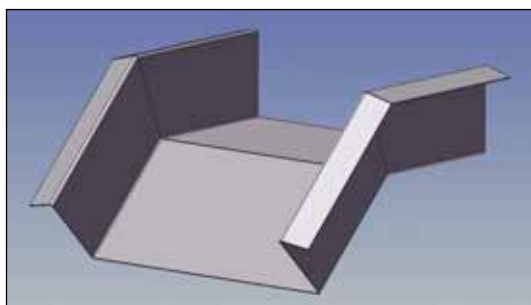
Innvendig vertikalbend 45°:
Inside vertical riser 45°:

CT-60 RI-IN-45-200	80622
CT-60 RI-IN-45-300	80623
CT-60 RI-IN-45-400	80624
CT-60 RI-IN-45-500	80625
CT-60 RI-IN-45-600	80626



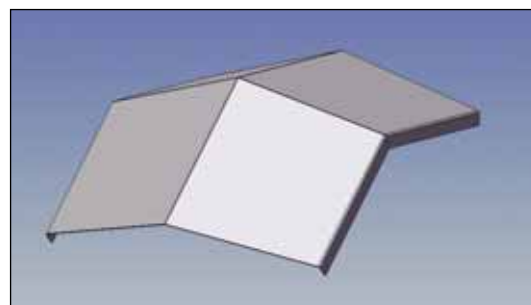
Deksel til innvendig vertikalbend 45°:
Cover for inside vertical riser 45°:

CT-60 CO-RI-IN-45-200	80628
CT-60 CO-RI-IN-45-300	80629
CT-60 CO-RI-IN-45-400	80630
CT-60 CO-RI-IN-45-500	80631
CT-60 CO-RI-IN-45-600	80632



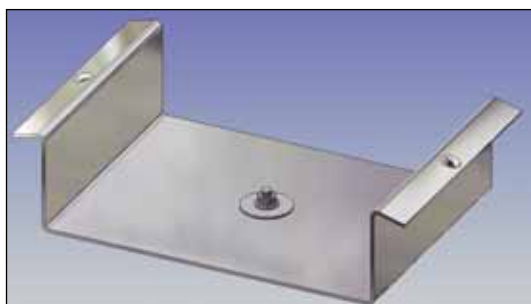
**Utvendig vertikalbend 45°:
Outside vertical riser 45°:**

CT-60 RI-OU-45-200	80640
CT-60-45-RI-OU-300	80641
CT-60-45-RI-OU-400	80642
CT-60-45-RI-OU-500	80643
CT-60-45-RI-OU-600	80644



**Deksel til utvendig vertikalbend 45°:
Cover for outside vertical riser 45°:**

CT-60 CO-RI-OU-45-200	80646
CT-60 CO-RI-OU-45-300	80647
CT-60 CO-RI-OU-45-400	80648
CT-60 CO-RI-OU-45-500	80649
CT-60 CO-RI-OU-45-600	80650

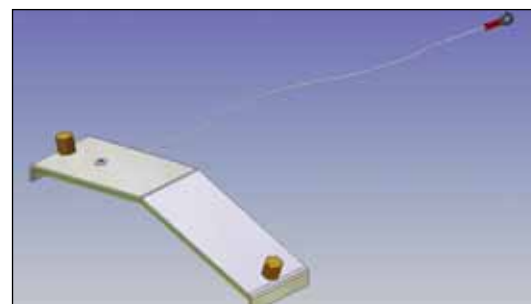


Skjøt / Splice:

CT-60 SC-200	80517
CT-60 SC-300	80518
CT-60 SC-400	80519
CT-60 SC-500	80520
CT-60 SC-600	80521

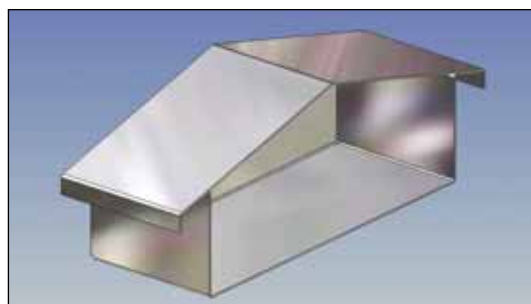
Dekselskjøt
leveres med
innvendig fast
pakning og kan
leveres med
festeveier.

Cover splice is
supplied with fixed
gasket and can be
supplied with
fixing wire.



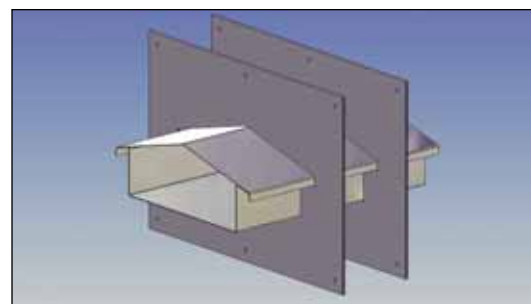
Dekselskjøt / Cover splice:

CT-60 CO-SC-200	80523
CT-60 CO-SC-300	80524
CT-60 CO-SC-400	80525
CT-60 CO-SC-500	80526
CT-60 CO-SC-600	80527



Endestykke / End piece:

CT-60 EC-200	80762
CT-60 EC-300	80763
CT-60 EC-400	80764
CT-60 EC-500	80765
CT-60 EC-600	80766

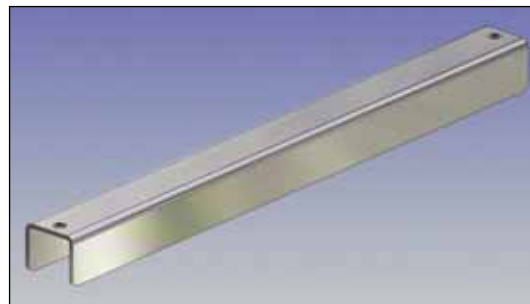


Vegg gjennomføring / Wall exit:

CT-60 WT-200	80546
CT-60 WT-300	80547
CT-60 WT-400	80548
CT-60 WT-500	80549
CT-60 WT-600	80550

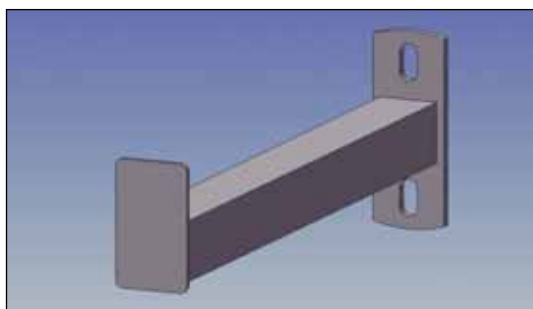


OPPHENG / SUPPORT:



Opphingsbraket / Support bracket:

CT-60 SB-200	80532
CT-60 SB-300	80533
CT-60 SB-400	80534
CT-60 SB-500	80535
CT-60 SB-600	80536



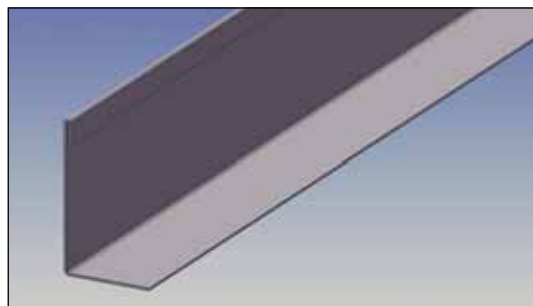
Veggkonsoll / Cantilever arm:

CT-60 CA-200	80543
CT-60 CA-300	80544
CT-60 CA-400	80692
CT-60 CA-600	80748



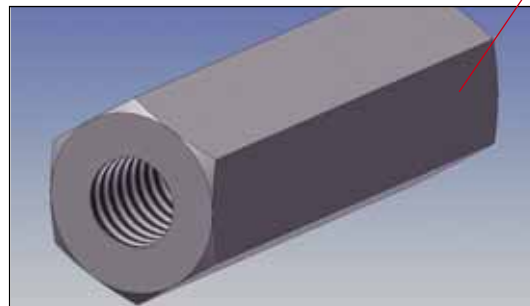
Rundstag / Threaded rod:

CT-60 TR-M8-300 mm	80606
CT-60 TR-M8-500 mm	80693
CT-60 TR-M8-700 mm	80694



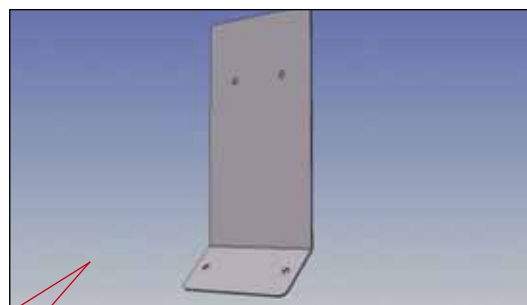
Skilleplater / Divider:

CT-60 DI-60	80529
-------------	-------



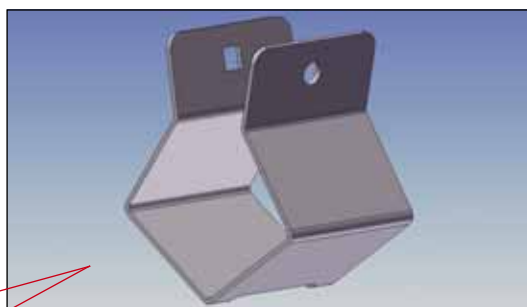
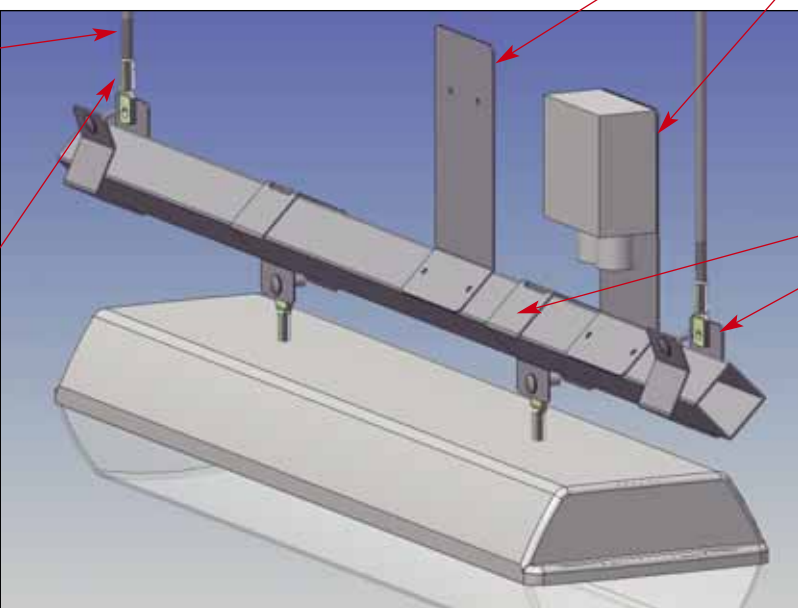
Skjøtemutter / Splice nut:

S-M-SN-M8x40	80678
--------------	-------



Køblingsboks plate / Junction box bracket:
CT-60 JB-LT-40 80691

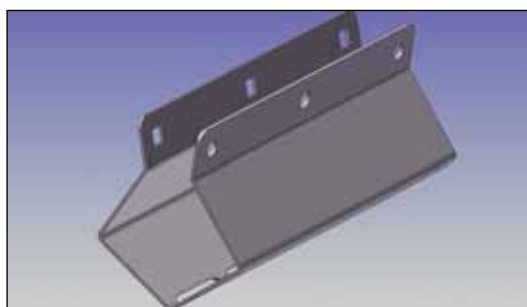
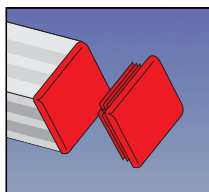
ARMATURKANAL / LIGHTING TRUNKING:



**Opphøngsbrakett for Armaturkanal:
Support bracket for Ligthing channel:**
CT-60 SB-LT-40 80551

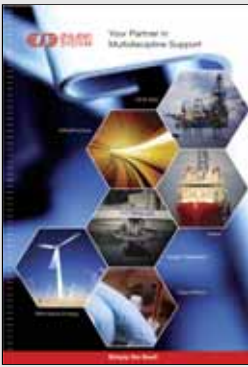
Armaturkanal / Lighting trunking:
CT-60 LT-40 80689

Endeplugg plastikk / End cap plastic
D-97-40 1371927



Skjøt til armaturkanal / Lighting channel splice
CT-60 SC-LT-40 80767

- Sika produkter / Sika products**
- Sikafast fugesprøyte/application gun 80883
 - Sikafast 5211 grå/grey cartridges 80884
 - Sikafast dyser/nozzles 80885
 - Sikaflex handclean 72 kluter/wipes 80886
 - Sikaflex 11FC grå/grey cartridges 80887



PRODUKT- INFORMASJON

Øglaend System tilbyr opphengssystemer tilpasset alle faggrupper, kabelstiger, kabelbaner, koblingsboksstativ, rørklammer, kabelklammer (trefoil cleats), varmekabler, styringssystemer m.m.

**Har du spørsmål?
Vennligst ta kontakt.**

Firmapresentasjon
Company presentation

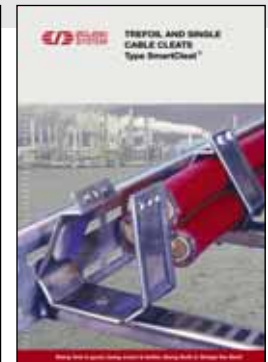
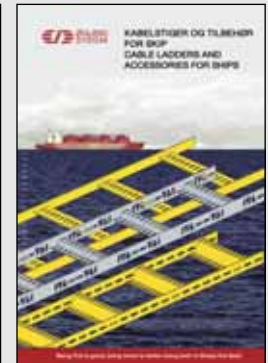
Last ned siste versjon av våre produktkataloger fra:

Download our latest version of product catalogues from: www.oglaend-system.com

PRODUCT INFORMATION

Oglaend System offer a broad range of cable support systems for all applications, e.g. cable ladders, cable trays, junction box racks, tubing clamps, cable cleats, heating cables, control systems etc.

**If you need further information,
please do not hesitate to contact us!**



SALGSKONTORER LOCATIONS

HOLDING COMPANY

Øglaend Industrier AS
P.O. Box 133
NO-4358 Kleppe
Tel.: + 47 51 78 81 00
Fax: + 47 51 78 81 60
www.oglaend-system.com

DATTERSELSKAP/SUBSIDIARY

Norway

Øglaend System AS
P.O. Box 133
NO-4358 Kleppe
Tel.: + 47 51 78 81 00
Fax: + 47 51 78 81 60
Fax sales office: + 47 51 78 81 61
Email: oglaend@oglsys.no
www.oglaend-system.com

Denmark

Øglaend System AS
Tel.: +45 86 88 66 66
Fax: +45 86 88 66 67
Email: oglaend-system@oglsys.dk

Dubai (Middle East)

Øglaend Industries Middle East
Tel.: + 971 4 887 8134
Fax: + 971 4 887 8143
Mobile: + 971 50 55 86 183
Email: sales@oglaend.ae

Malaysia

Øglaend Industries SDN BHD
Tel.: + 60 3 51 922 049
Fax: + 60 3 51 922 039
Mobile: + 60 1 26 85 57 65
Email: sales@oglaendind.com
fraser@oglaendind.com

The Netherlands

Øglaend System BV
Tel.: + 31 1804 14 204
Fax: + 31 1804 19 395
Email: rfq@oglaend-system.nl

Russia (St. Petersburg)

Øglaend System Russia
Tel.: +7(812) 313 1580
Fax: +7(812) 313 1580
Email: info@oglsys.ru
www.oglaend-system.ru

Singapore (South East Asia)

Øglaend System Singapore Pte. Ltd.
Tel.: + 65 67 48 82 78
Fax: + 65 67 48 86 15
Email: oglaend.system@pacific.net.sg

Sweden

Øglaend System AB
Tel.: + 46 40 45 74 60
Fax: + 46 40 45 67 25
Email: oglaend-system@oglsys.se

UK

Øglaend System UK Ltd.
Tel.: + 44 121 552 9662
Fax: + 44 121 544 6627
Email: oglaend.system@oglsys.co.uk

USA

Øglaend System USA
Tel.: +1 832 288 4452
Email: sales@oglsys-us.com

Korea

Øglaend System Korea Co Ltd
Tel.: + 82 518 320 761
Fax: + 82 518 320 762
Email: oglaend@oglaend-system.co.kr

SALGSKONTORER/SALES OFFICES

Norway

Øglaend System AS, Division Oslo:
Tel.: + 47 22 25 15 10
Fax: + 47 22 25 25 21

Øglaend System AS, Division Ålesund:
Tel.: + 47 70 19 09 50
Fax: + 47 70 19 09 51

Øglaend System AS, Division Trondheim:
Tel.: + 47 73 80 99 70
Fax: + 47 73 80 99 77

AGENTER - FORHANDLERE/ AGENTS - DISTRIBUTORS

Abu Dhabi

Proserv Albadie LLC
Tel.: + 971 26 27 73 70
Fax: + 971 29 27 79 72
Email: proserv@emirates.net.ae
www.proserv.no

Australia

J. T. Day Pty. Ltd.
Tel.: + 61 8 9303 2248
Fax: + 61 8 9303 2446
Email: enquiries@jtday.com.au
www.jtday.com.au

Brazil

M.O.TECH do Brazil
Tel.: + 55 21 2532 2101
Fax: + 55 21 2517 2437
Email: motech@motech.com.br
www.motech.com.br

Brunei

Shinba Integrated Engineering Services
Tel.: + 673 333-1489
Fax: + 675 333-6333
Email: info@shinbaies.com

Canada

Apel/CSA Enterprises
Tel.: + 1 902 450 5647
Fax: + 1 902 450 5286
Email: urquhart@csarep.com
www.csarep.com

NOSO Ltd.

Tel.: + 1 709 782 2645
Fax: + 1 709 782 0534
Email: mshinkle@coil.ca
www.noso.ca

Finland

Elmarino - Shipping OY
Tel.: + 358 22 54 61 00
Fax: + 358 22 54 62 76

Finn H&T Group Oy

Tel.: +358 45 630 4004
Fax: +358 3 5752550
Email: teppo.kuivanen@finnhtgroup.fi
www.finnhtgroup.fi

Iceland

Smith & Norland
Tel.: + 354 52 03 000
Fax: + 354 52 03 011
Email: sminor@sminor.is
www.sminor.is

Indonesia

PT. Multi Tarex Mulla
Tel.: + 62 21 3983 5337
Fax: + 62 21 3983 5340
Email: agus@multitarex.co.id
www.multitarex.com

Italy

Piemme Broker S.R.L.
Tel.: +39 02 906 33621
Fax +39 02 906 32036
Email: m.maiandi@pmbroker.it
www.pmbroker.it

Malaysia

Offshore Industries Sdn Bhd
Tel.: + 60 3-9284 0613
Fax: + 60 3-9284 1051
Email: oisbkl@tm.net.my

Poland

Nd Service Sp. Z.O.O.
Tel.: + 48 665 070 111
Email: wojciech.pedzich@ndservice.pl
www.ndservice.pl

Thailand

Probitry International Co Ltd.
Tel.: + 66 2 710 6146 Ext. 107
Fax: + 66 2 710 6147
Email: ak@probitry.co.th
www.probitry.co.th

The Baltic States

Bastini OU
Tel.: + 372 660 5811
Fax: + 372 660 5812
Email: sales@bastini.ee

Vietnam

MT Corp.
Tel.: + 848 821 0373
Fax: + 848 821 0358
Email: mail@mt-co.com



- ★ HEAD OFFICE AND FACTORY
- SUBSIDIARIES
- AGENTS - DISTRIBUTORS
- ▲ SALES OFFICES
- X FABRICATION FACILITIES

SIMPLY THE BEST!

Dette har vært vårt motto helt siden firmaet ble grunnlagt i 1977.

Ved å følge dette mottoet har vi blitt markedslederen innen våre felt – globalt.

Øglænd Systems mål er å utvikle systemer som er de beste, enkleste og mest økonomiske på markedet.

This has been our motto since the company was founded in 1977. By living up to the motto we have become the market leader in our field – worldwide.

Oglaend System´s goal is to develop systems that are better, simpler and more economic overall.



Konsern/Holding company:
Øglænd Industrier AS

Datterselskap/Subsidiary:
Øglænd System AS
Hovedkontor fabrikk/Head Office factory:
P.O. box 133, NO-4358 Kleppe,
Tel.: +47 51 78 81 00, Fax: (47) 51 78 81 60
Fax sales office: +47 51 78 81 61